

State of Wyoming Corner Record

(In compliance with the CORNER PERPETUATION AND FILING ACT, Wyoming Statutes, 1997 Section 33-29-140, et. seq., and the Rules and Regulations of the Board of Professional Engineers and Professional Land Surveyors)

Reverse side of this form may be used if more space is needed.

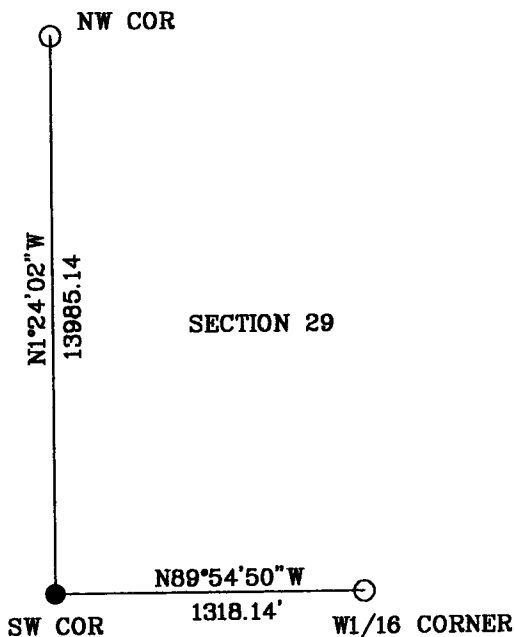
Record of original survey and citation of source of historical information (If corner is lost or obliterated), Description of corner monumentation evidence found and/or monument and accessories established to perpetuate the location of this corner. Sketch of relative location of monument, accessories and reference points with the course and distance to adjacent corner(s) (if determined in this survey). Method and rationale for re-establishment of lost or obliterated corner.

SEARCHED FOR REBAR & CAP SET BY JOHN STEIL, LS2500, COULD NOT FIND. REPLACED BY DISTANCE-DISTANCE INTERSECTION BASED ON DIAMOND B PLAT FROM SECTION CORNER 1 MILE NORTH AND 1/16th CORNER TO THE EAST.

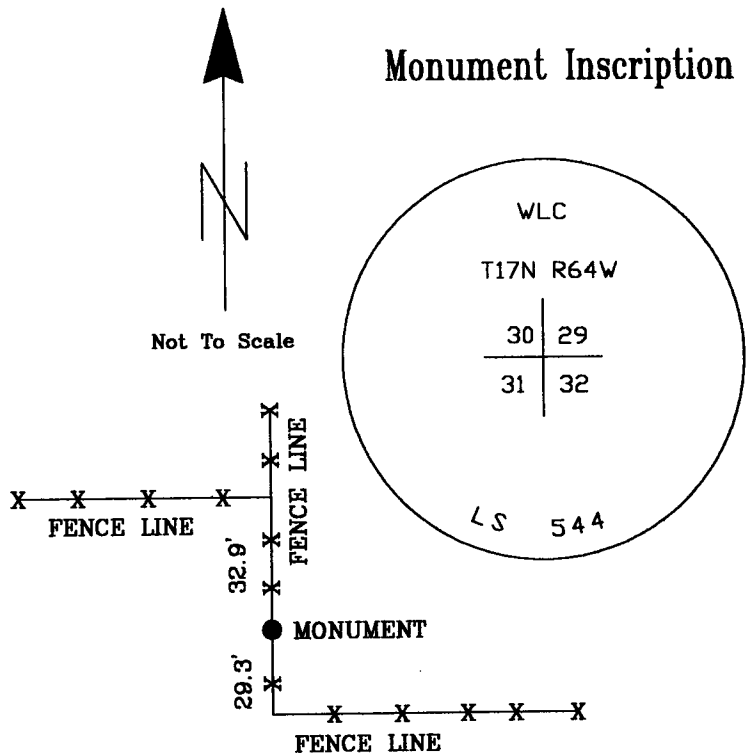
LAT = 41°24'17.033"N

LONG = 104°34'33.033"W

Monument Location



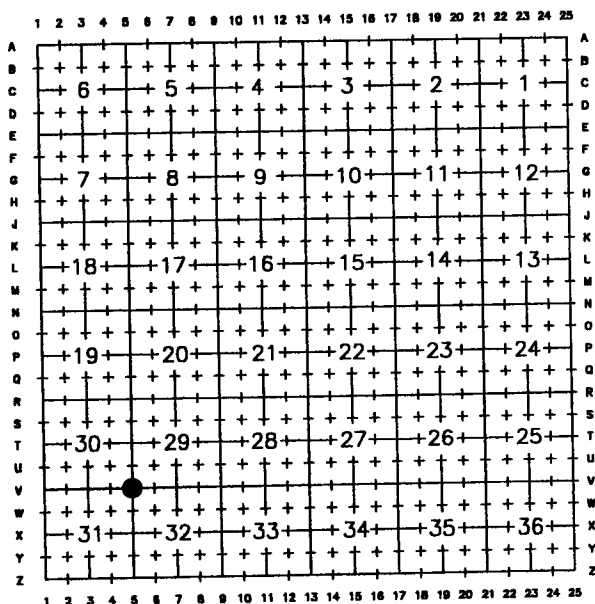
Monument Inscription



LATITUDE AND LONGITUDE NOT REFERENCED TO CORS STATION

Date of Field Work: 10/1/2010 Office Reference: 13985.14

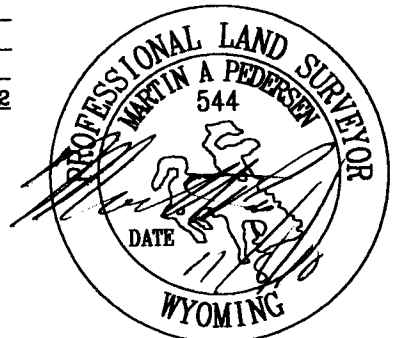
Cross Index Diagram



Firm/Agency, Address

Robert Jack Smith & Associates
1015 Harshman St.
P.O. Box 1104
Rawlins, Wyoming 82301
Telephone Number: (307) 324-5262

This corner record was prepared by me or under my direction and supervision.



RECORDED 11/10/2010 AT 3:45 PM REC# 556951 BK# 2192 PG# 1169
 DEBRA K. LATHROP, CLERK OF LARAMIE COUNTY, WY PAGE 1 OF 1

Corner Name SW Section 29, T 17 N, R 64 W, 6th P.M. Cross-Index No: V-5
 County: LARAMIE, Wyoming